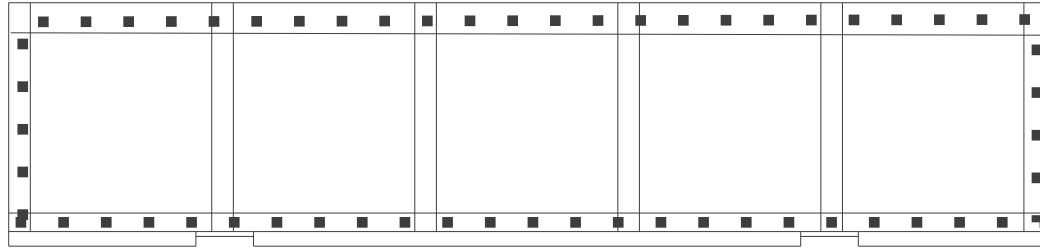


# ADVANCED PIPING PRODUCTS

## “PROTEK” INSULATED COMPOSITE PIPE SHOE INSTALLATION INSTRUCTIONS

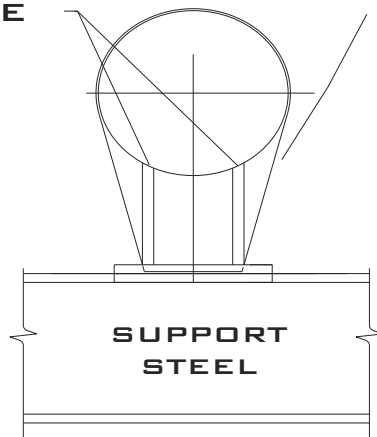
1. RUN A SILICONE BEAD AROUND THE UPPER EDGE OF THE PIPE SHOE.



2. PLACE “PROTEK” COMPOSITE PIPE SHOE  
ACROSS THE PIPE RACK / I-BEAM.

APPLY SILICONE TO  
THIS SURFACE

3/4" SS BANDS



3. JOIN THE SHOE TO THE  
PIPE USING 2 SS STRAPS AS  
SHOWN.

4. USING A BANDING  
TENSIONING TOOL, PULL THE  
BANDS TIGHT, AND SECURE  
USING 3/4" WING CLIPS..

THE STAINLESS STEEL BANDS, CLIPS, AND  
BANDING TOOL ARE AVAILABLE FOR SEPARATE  
PURCHASE.